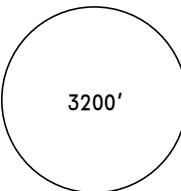
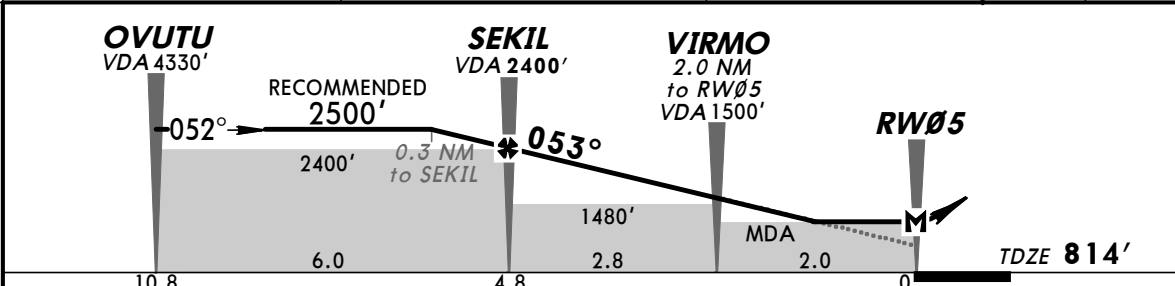
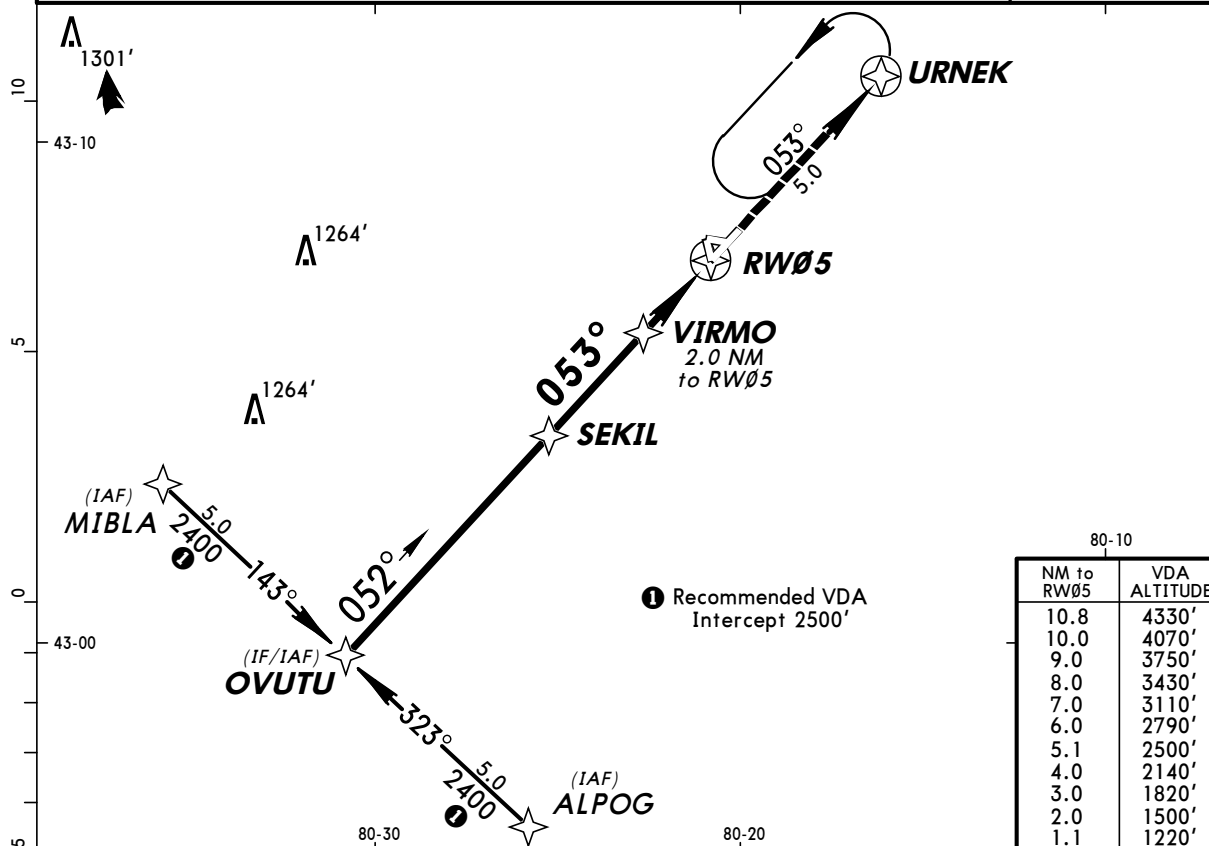


TORONTO Center 128.27		*BRANTFORD UNICOM ATF 122.825		BRANTFORD Traffic ATF 122.825 when UNICOM inop.	
RNAV	Final Apch Crs 053°	VDA SEKIL 2400' (1586')	RNAV MDA(H) 1220' (406')	Apt Elev 815' TDZE 814'	
MISSED APCH: Climb to 3200' track 053° to URNEK. As required, shuttle climb.					 3200' MSA RW05
Alt Set: INCHES Trans level: FL 180 Trans alt: 18000' 1. SAFE ALTITUDE WITHIN 100 NM 4900'. 2. Use Hamilton (CYHM) altimeter setting. 3. Aerodrome assessed for aircraft wingspans less than 118'. 4. Pilot controlled lighting 122.825.					



Gnd speed-Kts	70	90	100	120	140	160		REIL	3200'	053°	URNEK
VDA	3.03°	375	482	536	643	750	858	VASI-L			
MAP at RW05											

STRAIGHT-IN LANDING RWY 05						CIRCLE-TO-LAND					
LNAV						Max Kts MDA(H)					
MDA(H) 1220' (406')											
A						90	1320' (505') - 1 1/2				
B						120	1340' (525') - 2				
C	1 1/4					140	1340' (525') - 2				
D						165	1420' (605') - 2				